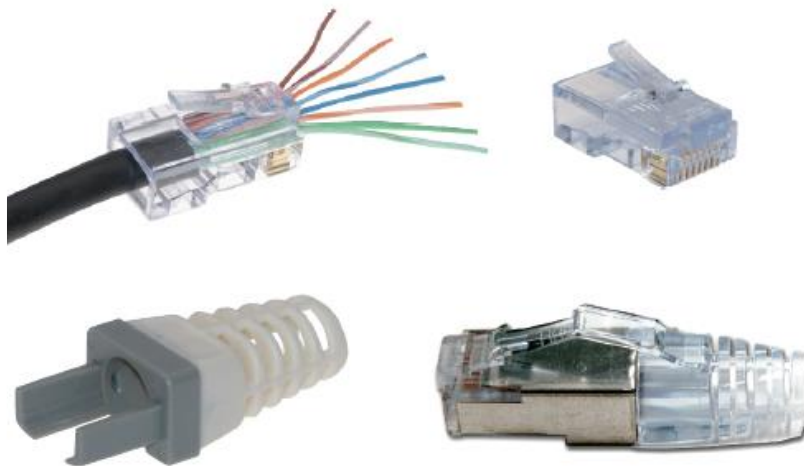


BTX CD-EZR45 connectors



- 46-591 BTX CD-EZRJ455E RJ45 Cat5E plug (pack of 100)
- 46-592 BTX CD-EZRJ456 RJ45 Cat6 plug (pack of 100)
- 46-593 BTX CD-EZRJ456S RJ45 Cat5E/Cat6 shielded plug (pack of 25)
- 46-594 BTX CD-EZ5SB Snagless boot for CD-EZRJ455E, transparent (pack of 100)
- 46-595 BTX CD-EZ6SB Snagless boot for CD-EZRJ456, transparent (pack of 100)
- 46-596 BTX CD-EZ6BOOT Strain relief boot for CD-EZRJ456/456S, grey (pack of 100)

The CD-EZRJ45 connector range simplifies twisted-pair terminations by allowing the wires to be inserted through the connector and out the front. This allows easy verification of correct wiring before termination, reducing scrap/wasted crimp connectors.

Features:

- Works with solid or stranded wire
- Simple one piece design, no bars or liners
- Easy verification of wire sequence
- Faster terminations
- Meets ANSI/EIA/TIA/TAA specifications
- RoHs3/FCC compliant
- UL listed E188111, UL94V-0

46-591 BTX CD-EZRJ455E RJ45 Cat5E plug (pack of 100)

Max cable o.d.	6.09mm
Max conductor insulation o.d.	1.016mm
Conductors (solid or stranded)	24 – 23 AWG (0.22mm ² – 0.25mm ²)
Connector contacts	50 micron gold plated
Connector colour	Transparent

46-592 BTX CD-EZRJ456 RJ45 Cat6 plug (pack of 100)

Max cable o.d.	6.98mm
Max conductor insulation o.d.	1.016mm
Conductors (solid or stranded)	24 – 23 AWG (0.22mm ² – 0.25mm ²)
Connector contacts	50 micron gold plated
Connector colour	Transparent

46-593 BTX CD-EZRJ456S RJ45 Cat5E/Cat6 shielded plug (pack of 25)

Max cable o.d.	6.60mm
Max conductor insulation o.d.	1.016mm
Conductors (solid or stranded)	24 – 23 AWG (0.22mm ² – 0.25mm ²)
Connector contacts	50 micron gold plated
Connector colour	Metal screened cover

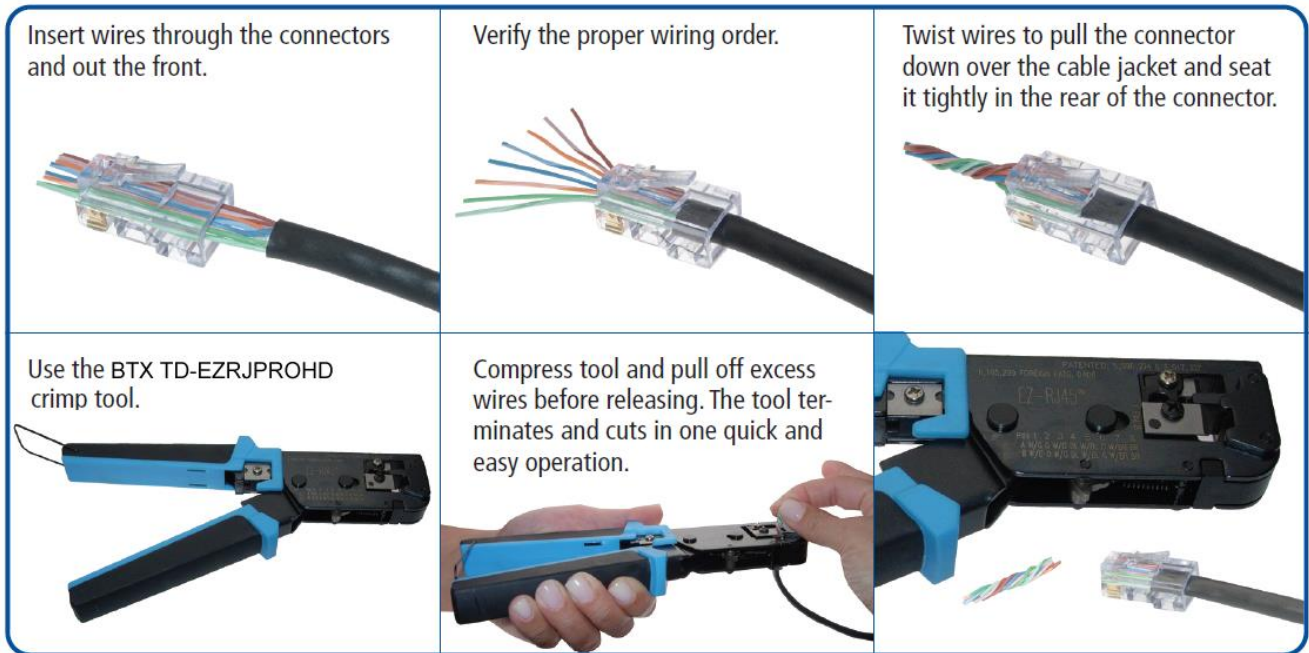
BTX CD-EZR45 connectors

Tooling:

55-837 BTX TD-EZRJPROHD Crimp tool for BTX CD-EZRJBL connectors

55-838 BTX TD-EZRJBL Spare blade set for TD-EZRJPROHD crimp tool (set of 2)

Termination Process:



CANFORD



www.canford.co.uk